

SFC SERIES



Urethane Flexible Coupling



Structure and Material

Structure	Material	Surface Treatment
Hub	Steel	Electroless Nickel Plating
Middle Part	Poly Urethane	-
Screws	SCM435	Black Oxide

Product Features & Application

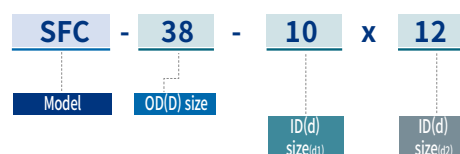
- SFC series is flexible with Urethane material and is especially excellent for absorbing misalignment to a greater extent.
- The middle Urethane structure absorbs external impacts and absorbs vibration.

Vibration Absorption	<input type="radio"/>	Applicable Motors	Servo	-
Misalignment Absorption	<input type="radio"/>		Stepping	-
Insulation of Electric Current	<input type="radio"/>		Encoder	<input type="radio"/>
			General	<input type="radio"/>

Clamping Methods

Set-screw (No mark)	General	<input type="radio"/>
	With Keyway	X
Side-clamp (C)	General	X
	Hub Split	X
	With Keyway	X
Taper-ring (T)		X

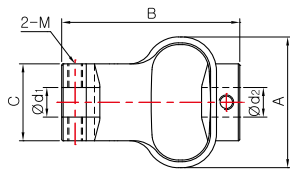
How to Order



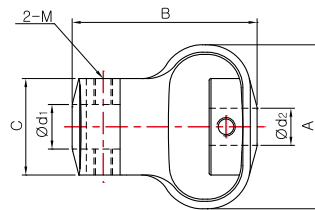
SFC SERIES

Urethane Flexible Coupling

Set-screw



Size: 29, 38



Size: 48, 54

Dimensions / Performance

Model	Size ($\pm 0.3\text{mm}$)			Screw		Max. Torque (N·m)	Max. rpm (min^{-1})	Mass (g)	Permissible Misalignment		
	A	B	C	Size	Fastening Torque (N·m)				Angular ($^{\circ}$)	Parallel (mm)	End-play (mm)
SFC-29	25	28	18	M4	1.7	0.35	3,000	19	10	2	1.5
SFC-38	32	35	22.5	M4	1.7	1.35	3,000	38	10	2.5	2
SFC-48	43	50	26	M5	4	1.8	3,000	60	12	2.5	2
SFC-54	50	59	29.5	M6	7	4.5	3,000	140	12	3	2

Standard Inner Diameter (ID)

Model	Standard Inner Diameter (d_1, d_2) (mm)									
	4	5	6	8	10	12	14	15	16	
SFC-29	●	●	●	●	●					
SFC-38			●	●	●	●				
SFC-48				●	●	●	●			
SFC-54					●	●	●	●	●	●

※ Keyway is **NOT** available for all sized SFC series.